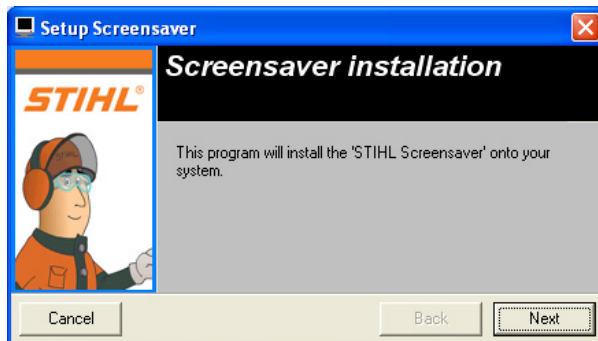


Instruction

To install the STIHL Screensaver, carry out the following steps:



Start the application "STIHL_Screensaver.exe" and follow the instructions displayed by the installation program.



Once the Screensaver has been installed, a dialog with the settings for the Windows Screensaver (Properties of display -> Screensaver) opens automatically.

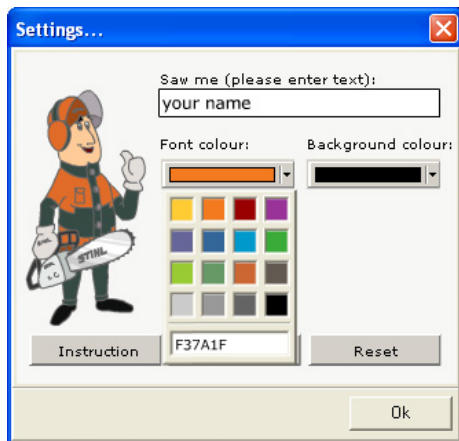
In this dialog, the STIHL Screensaver is automatically pre-selected.

To change the settings, click on the button "Settings".



A new dialog now opens.

Here, you can enter the word which is to be sawn.



With the buttons "Font colour" and "Background colour", you can select the desired colours by clicking on the appropriate colour icon.

A tip for experts: you can define an individual colour, such as your company colour, by entering the related hexadecimal value in the field below the colour box.

When you are satisfied with the settings you have selected, click on the button "Save" to save these values.

Clicking on the button "Reset" resets all settings for the Screensaver back to their default value

When you are finished, click on the "Ok" button to close the settings dialog.

Note: the changes you make in the dialog will be saved only if you click on the button "Save" before closing the dialog.

The task icon for the STIHL Screensaver

The STIHL Screensaver automatically generates a new icon in the task bar. You can start the Screensaver at any time with a single click on this icon. A right-click on this icon opens a menu in which you can, for example, open the settings dialog for the Screensaver.

Starting the Screensaver

Alternatively, the Screensaver can be started from the start menu (Start - All Programs - "'STIHL Screensaver'").

Uninstalling the Screensaver

The Screensaver can be uninstalled from the start menu (Start - All Programs - "'STIHL Screensaver'" - "Uninstall")